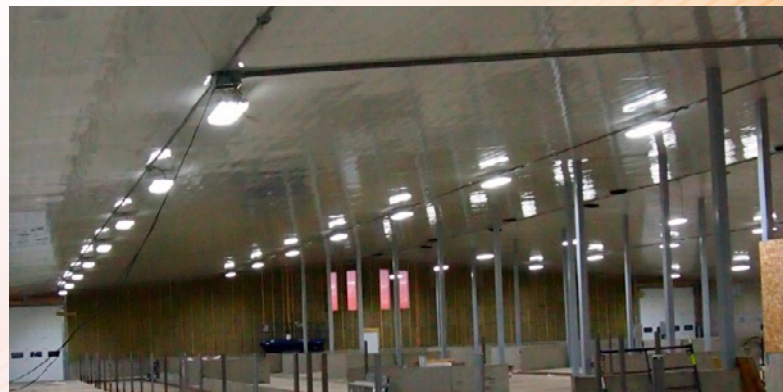
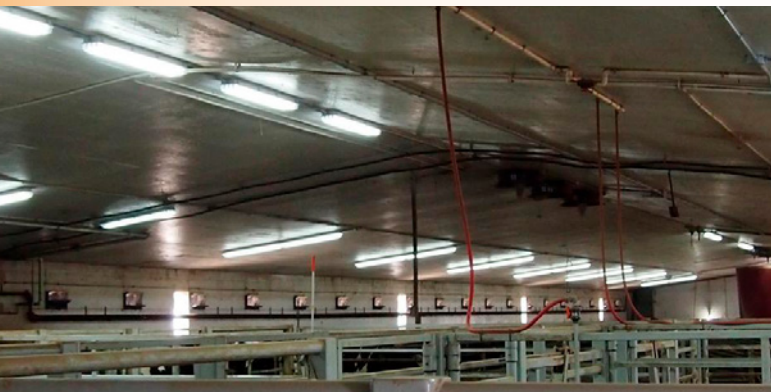


# ÉCLAIRAGE CBM LIGHTING

**EXPERTS IN AGRICULTURAL LIGHTING SINCE 1992**

PRODUCTS FOR BOVINE INDUSTRY



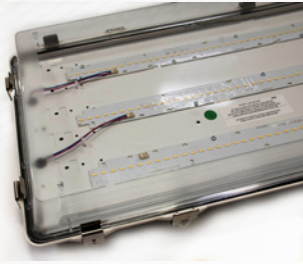
[www.cbmlighting.com](http://www.cbmlighting.com)

# HIGHBAY SERIES

## HIGHBAY LED BOARDS

IP67

IP69



High bay with LED boards  
Power from 92 to 184 watts  
Available in 2', 4'

## HIGHBAY LED TUBES

IP67

IP69



High bay with LED TUBES  
Power from 92 to 184 watts  
Available in 2', 4'

## HIGHBAY UFO

IP65



Round High bay LED waterproof  
Power of 100, 150 and 200 watts

# VAPOR TIGHT SERIES

## AWC LED BOARDS

IP67



LED boards waterproof fixture  
Power from 46 to 184 watts  
Available in 2', 4' and 8'

## AWC LED TUBES

IP67



LED tubes waterproof fixture  
Power from 18 to 120 watts  
Available in 2', 4' and 8'

## VP LED BOARDS

IP65



LED waterproof IP65 fixture  
Power of 100, 150 and 200 watts  
Available in 4'

## WN LED BOARDS

IP66



LED boards waterproof fixture  
non-dimmable  
138 watts  
Available in 6'

## WP LED TUBES

IP65



LED tubes waterproof fixture  
dimmable or non-dimmable  
High impact acrylic diffuser  
Power from 9 to 60 watts  
Available in 2' and 4'

# LOW BAY SERIES

## 4' Low Bay 40W, 80W, 100W Led fixture

- Made with extruded aluminum housing and shock-resistant polycarbonate diffuser.
- This IP65 water tight, dustproof and corrosion resistant product allow's you to make considerable savings both in energy consumption and maintenance cost.
- Suggested for ceiling installation from 6'5" to 20'.
- Optional dimming and motion sensor features.



IP65

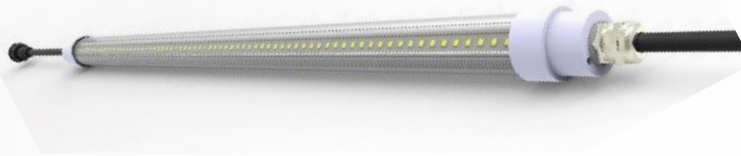
Lighting products to answer all your needs



## LED TUBES SERIES

Suitable for different types of installations, our high quality LED tube systems are designed for ease of installation and maintenance. The technical characteristics of these products will meet your most stringent requirements. Less than 4% invisible flicker index, 100% to 0.05% dimmable capability, IP66 waterproof, cleaning agent resistant polycarbonate lens and 80,000 hours durability. 6' long tube, 30W of power, input of 120 or 220 volts, 6500 kelvin color temperature with 220° beam angle.

IP66



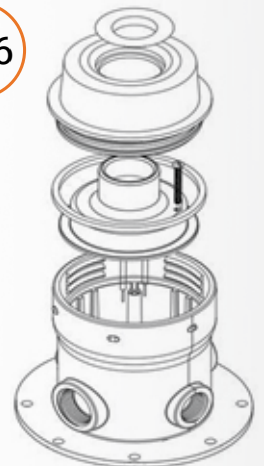
## SCR JELLY JAR SERIES

An ideal jelly jar LED system for applications such as farm buildings. This IP66 NEMA 4X fixture provides excellent heat dissipation.

It is built from the finest materials such as pure Lexan. This will allow you to realize significant savings in terms of energy consumption and maintenance costs. LED bulb of 7W and 12W in 2700K, 5000K or Full spectrum.



IP66



## CONTROLS

Designed and manufactured in Canada, our programmable controls can be used in master or 0-10 volts input mode.

Available in 1 zone or 2 zone control (10 amps/zone), and with 120 or 220 volts power.

**DTD-1-PRO/SLAVE**  
**DTD-2-PRO/SLAVE**



**DTD-I-2-PRO-120V**  
**DTD-I-2-PRO-220V**



Lighting products to answer all your needs

## ACCESSORIES



### EC2P / EC4P

2 or 4 pins Cables  
3', 5' 10', 12' et 15'



### EC2PT / EC4PT

T- Cable  
2 or 4 pins



### STL/MBRK

Stainless steel  
mounting brackets



### EC2PEND / EC4PEND

End cap



### EC2PFP/EC2PMP, EC4PFP/EC4PMP

Cable + pigtail  
female or male  
2 or 4 pins



### EC2PTSOCKET

T- socket

## OTHER PRODUCTS FOR YOUR BUILDINGS

IP20



### TBV / TBL

Linear or V-tube  
Dimmable or non-dimmable

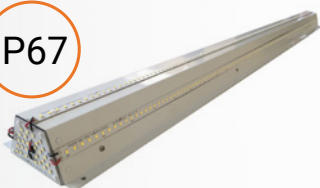
IP65



### SCR

Sealed LED light bulb  
Dimmable or non-dimmable  
Power 7 and 12 watts

IP67



### LB

Led retrofit light box  
replacing fluorescent  
system. (T5HO, T8, T12)  
Power of 84 watts

IP65



### SCRTS

Sealed LED light bulb  
with T socket  
Dimmable or non-dimmable  
Power 7 and 12 watts

IP66



### LWP

Waterproof wall light  
from 100W to 120W  
150 lm/W output

IP67



### PL

Panel Led light  
Very uniform light output  
Cct switch 3000K-5000K

IP66



### FB

Commercial flood Led light  
from 50W to 300W  
140 lm/W output

IP67



### EP

Explosion proof Led boards  
or Led tubes 4' or 8'  
Class I, div. 2 Group: ABCD

IP66



### SL

Waterproof street light  
with LED multi-chips  
120W  
150 lm/W output

ÉCLAIRAGE  
**CBM**  
LIGHTING

82, rue Irwin, Local #3 Granby ( Quebec) Canada J2J 2P1  
Tel.: 450-777-2848 - Fax 450-777-4872  
Toll free 1-888-966-3431 (USA) / 1-877-777-2849 (Canada)

[info@cbmlighting.com](mailto:info@cbmlighting.com) – [www.cbmlighting.com](http://www.cbmlighting.com)